

201 Overland Drive
Greenwood, SC 29646

Postage
Information

FEBRUARY 2018

Emerald Gardens

201 Overland Drive Greenwood, SC 29646 • (864) 953-2174 • <http://premierseniorliving.com/>



Groundhog Day and Wear Red Day
February 2

Snack Foods Saturday and Feed the Birds Day
February 3

Super Bowl Sunday
February 4

Potato Lovers Day
February 7

Chocolate Kisses Day and National Pizza Day
February 8

Story Telling Day
February 10

Dog Show Days
February 12

Pancake Day
February 13

Chinese New Year Begins
February 16

Valentine's Day
February 14

U.S. President's Day/ Chocolate Mint Day
February 19

February is heart month; so we are doing something special this month, by having some of our staff do different activities of their choosing with the residents. We all love every single one of the residents and want to show how much we love them, by doing something special with them.

We look forward to spending time with all of them and we hope to put a big smile on their faces!

Highlights and Special Activities for February...

February 1st: Making Heart Deco Mesh Wreaths at 10:00 a.m.

February 2nd: Making a Beaded Heart Sun Catcher/Ornament at 10:30 a.m.

February 7th: Watching a Romantic Comedy, Breakfast at Tiffany's at 6:30 p.m.

February 9th: Making Valentine Cards with Pam at 10:00 a.m.

February 11th: Making Valentine Book Marks 2:30 p.m.

February 12th: Dog Show/Pet Therapy at 2:30 p.m. to Visit in all Common Areas

February 12th: Making Heart Shaped Jell-O at 10:30 a.m. and Enjoy it for a Snack at 6:30 p.m.

February 13th: Making Heart Shaped Cookies at 10:30 a.m. and Decorating and Tasting at 6:30 p.m.

February 14th: *Sweetheart Banquet* (Families are invited to come and spend time with their loved ones on Valentine's Day! We will have light snacks and a good time) from 3:30-4:30

February 14th: Valentine's Day Word Search at 6:30 p.m.

February 17th: Bob Shepard sings at 6:15

February 21st: Blast from the Past Survey with Alexis! Talk about your favorite snacks and how you used to enjoy them when you were a child or the snacks that you enjoy now as an adult, while snacking on a variety of snacks at 6:30 p.m.

February 24th: Devotion with Brenda at 3:00 p.m.

February 25th: Listening to Marc play the Ukulele and Singing Along at 2:30

February Birthdays

Gayla Banks 2/07



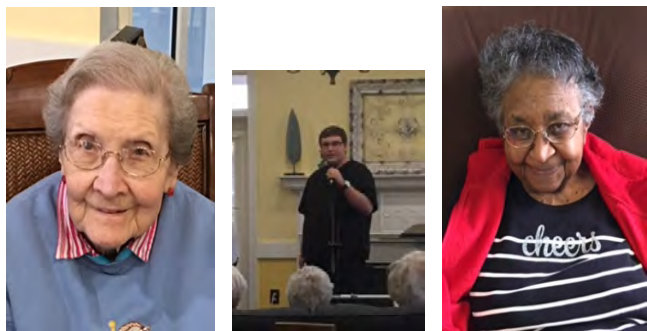
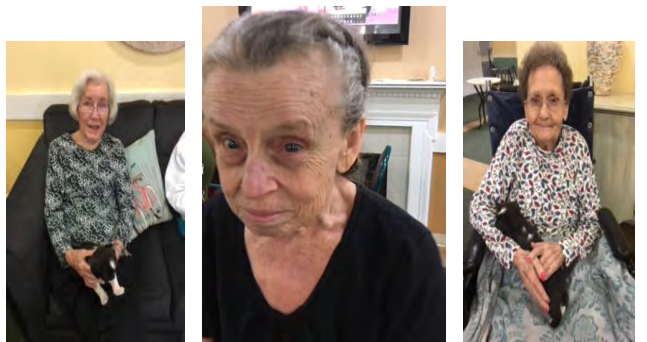
Emerald Gardens of Greenwood Assisted Living & Alzheimer's Care

Emerald Gardens Friends & Family Referral Program

Refer someone you know, and if they move-in, you will receive \$500 off one month's rent.

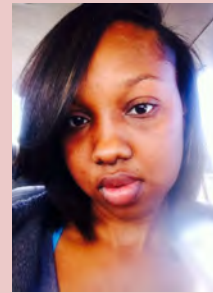
Twitter@EmeraldGardPSL





Employee of the Month

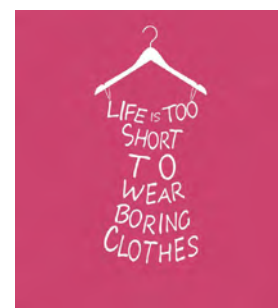
Brianna



"I've grown so close to each and every resident here at EG, that they're considered to be more as family to me. I love what I do as far as helping each resident with their everyday routines and activities and wouldn't change it for nothing in this world. Being able to put a smile on their faces, puts a smile on mine."
-Brianna

What to wear this month!

- February 1st: Wear **Pink!**
- February 2nd: Wear **Red!**
- February 4th: Wear your **Team's Colors!**
- February 6th: Wear **Blue Jeans!**
- February 14th: Wear **Red, Pink, or Purple!**
- February 19th: Wear **Green or Brown!**



Special Meal Days!

- February 7th: Enjoy a Baked Potato for Supper!
- February 8th: Enjoy a Slice of Pizza for Lunch!
- February 13th: Enjoy Pancakes for Breakfast!
- February 22nd: Enjoy a Slice of Cherry Dump Cake for Dessert with your Supper!



Got a Hidden Talent?

Emerald Gardens is looking for anyone that has talent, that can volunteer to entertain our sweet residents. If you or someone you know has an hidden talent, please let us know! We are looking for people that can sing, dance, play an instrument, do appropriate comedy, etc. Whatever your talent is please share with us and we would like to talk with you about possibly putting you on the calendar, so the residents of Emerald Gardens can enjoy the live entertainment.

Everything we do at Emerald Gardens is for the residents. We all love the residents and are here to serve them and make their lives as easy as possible, but also as enjoyable as possible. With your help, we can make the entertainment even better and the residents smiles even bigger!



Did you know???

Did you know that February is the shortest month of the year? February usually has 28 days, but on Leap Year Day, February has 29 days. This happens every four years. The next year for February to have 29 days will be the year 2020.

February is the third month of winter. There are three months of winter, December, January, and February. In the Southern Hemisphere, the winter months are June, July and August. That means in the Southern Hemisphere, February is classified as a summer month and would be equivalent to August! We live in the Northern Hemisphere.

